



Alert Level



Locations of Concern - See Sols Wash Flowchart Response Procedures

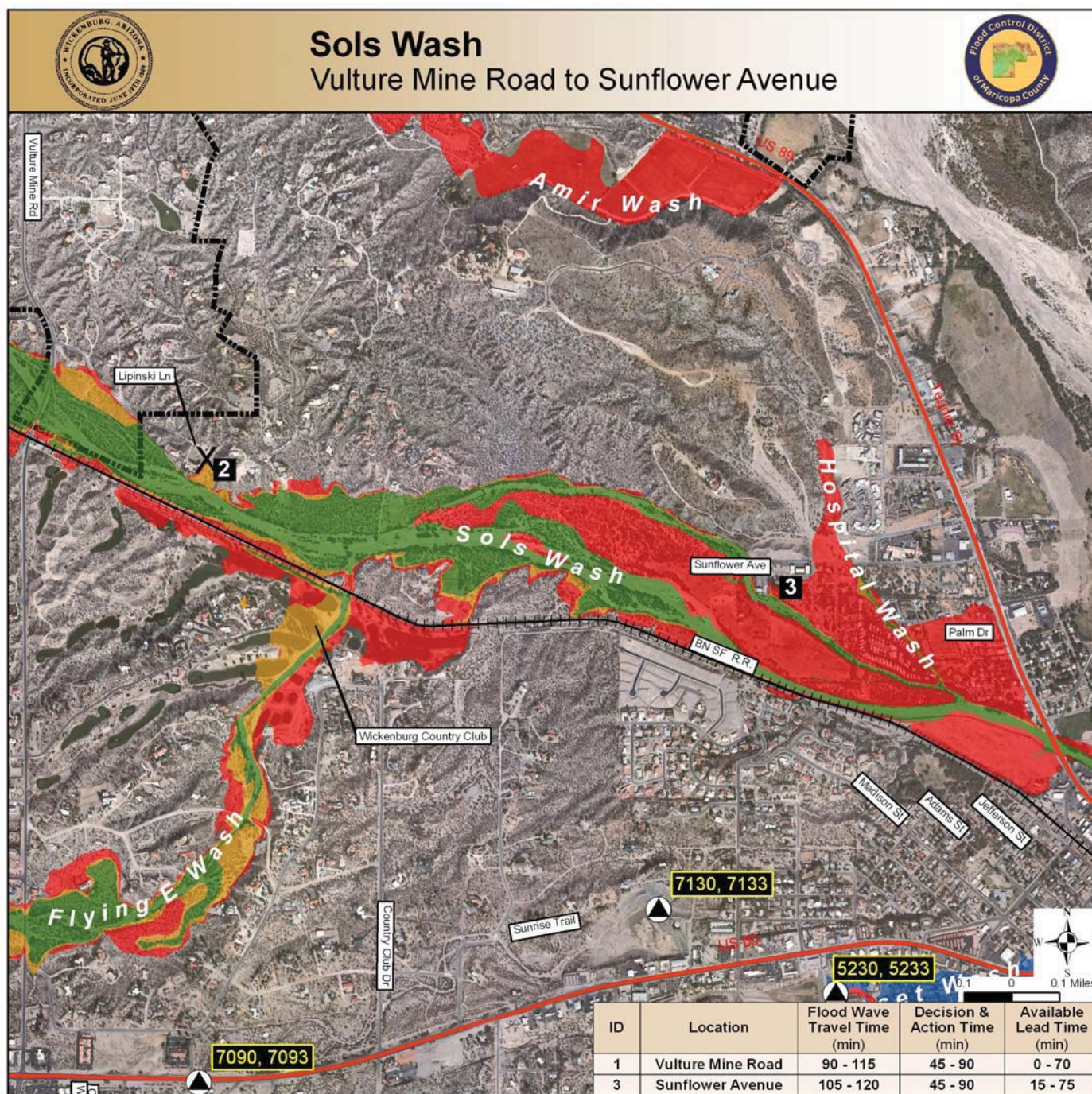
1. Vulture Mine Road Overtopped

X 2. Lipinski Lane Overtopped

X – Denotes Private/County Road Not Barricaded by the Town of Wickenburg
Note: Jurisdiction of the Wickenburg Police & Public Works Departments is within the Town limits only.

Legend

- Precipitation Gage
- ▲ Precip/Water Level Gage
- ⊗ Water Level Gage
- ⊕ Weather Station
- Major Streets
- Wash
- Wickenburg Boundary



Alert Level



Locations of Concern - See Sols Wash Flowchart Response Procedures

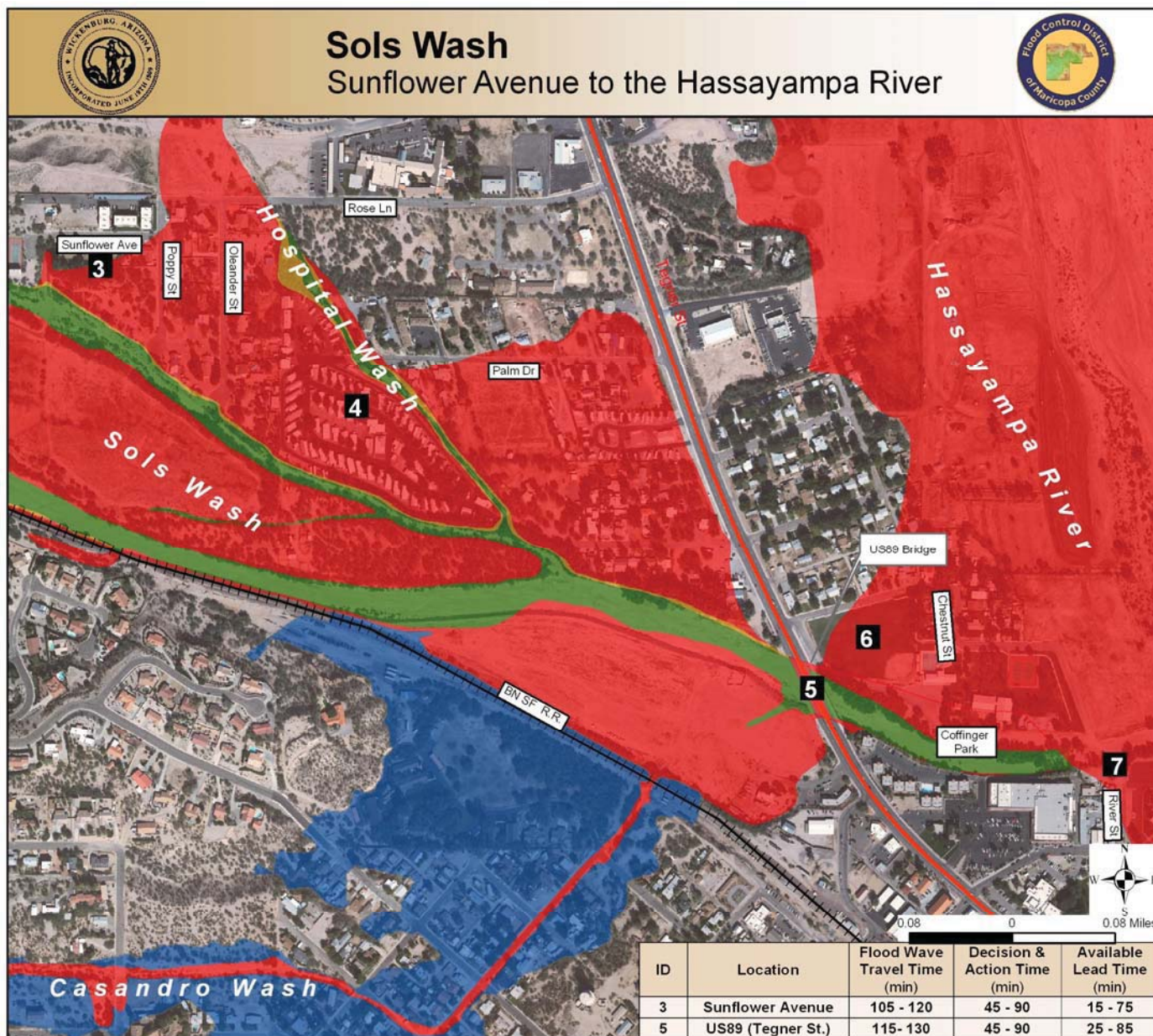
3. Access to Structures in Floodplain at Risk near Sunflower Ave.

X 2. Lipinski Lane Overtopped

X – Denotes Private/County Road Not Barricaded by the Town of Wickenburg
Note: Jurisdiction of the Wickenburg Police & Public Works Departments is within the Town limits only.

Legend

- Precipitation Gage
- ▲ Precip/Water Level Gage
- ⊗ Water Level Gage
- ⊕ Weather Station
- Major Streets
- Wash
- Wickenburg Boundary



Alert Level

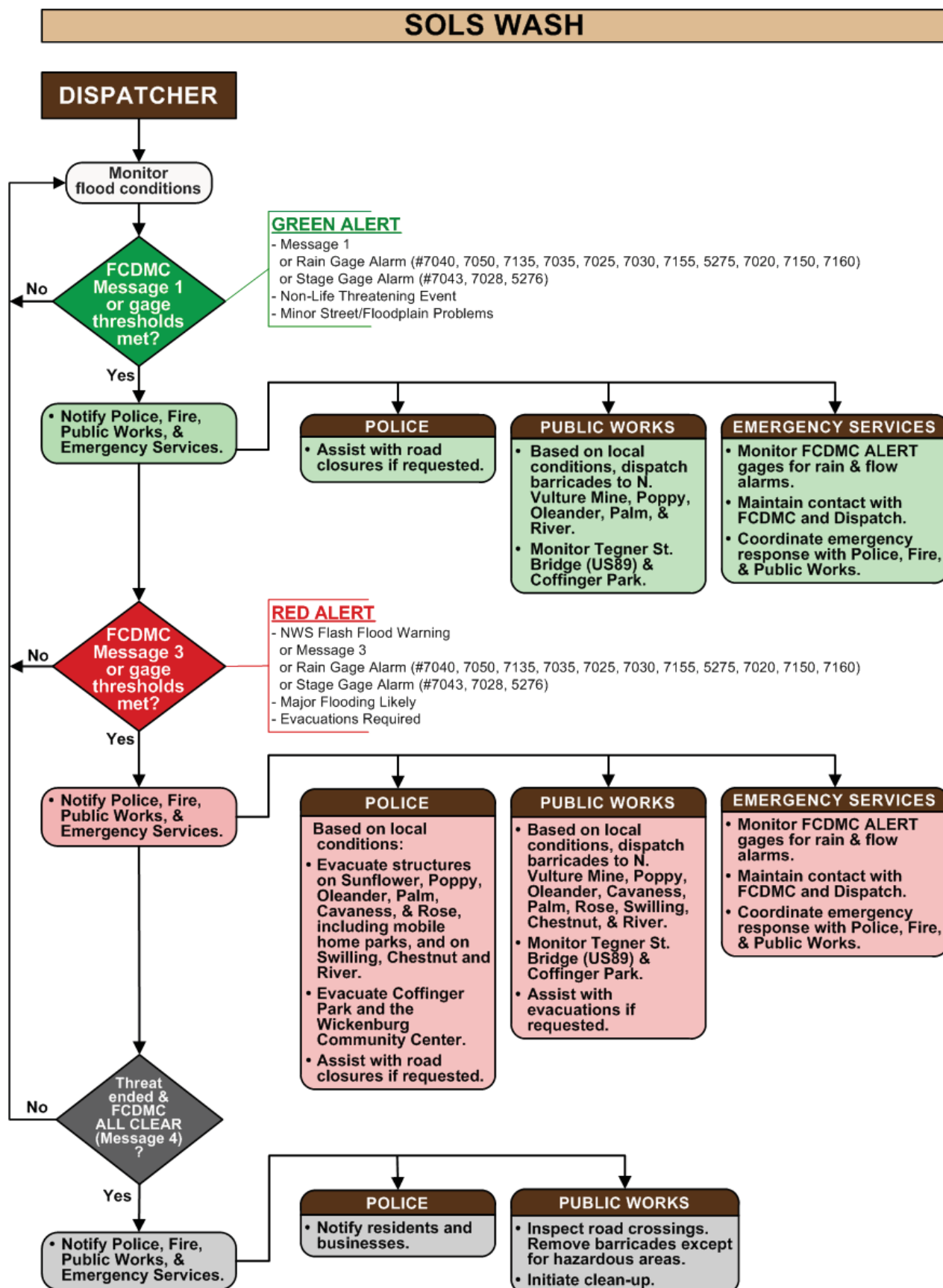


Locations of Concern - See Sols Wash Flowchart Response Procedures

3. Access to Structures in Floodplain at Risk near Sunflower Ave.
4. Street Flooding on Poppy, Oleander, & Palm
5. Monitor US89 Bridge (Tegner Street)
6. Monitor Coffinger Park
7. River Street Overtopped
3. Evacuate Structures on Sunflower Ave.
4. Poppy, Oleander, Palm, Cavaness, Swilling, & Rose Overtopped - Evacuate Adjacent Structures, including Mobile Home Parks
5. Monitor US89 Bridge (Tegner Street)
6. Evacuate Coffinger Park
7. Chestnut Street Overtopped - Evacuate Structures on Chestnut, Swilling, & River Streets, including Community Center

Legend

- Precipitation Gage
- ▲ Precip/Water Level Gage
- ⊗ Water Level Gage
- ⊕ Weather Station
- Major Streets
- Wash
- Wickenburg Boundary



SOLS WASH
Notification Data for
GREEN ALERT and **RED ALERT**

(Phone Numbers Provided Separately)

Organization	Name/Title	Contact Information
Emergency Services	Ronnie Miller, Coordinator	
Police	Tony Melendez, Chief	
Fire	Ed Temerowski, Chief	
Public Works	1. Rick Austin, General Foreman 2. Chris Rich, Crew Leader 3. Adam Balowski 4. Joseph Gough 5. Dawn Bender	
Flood Control District of Maricopa County	ALERT Room or	
	Steve Waters	
	Jim Perfrement	