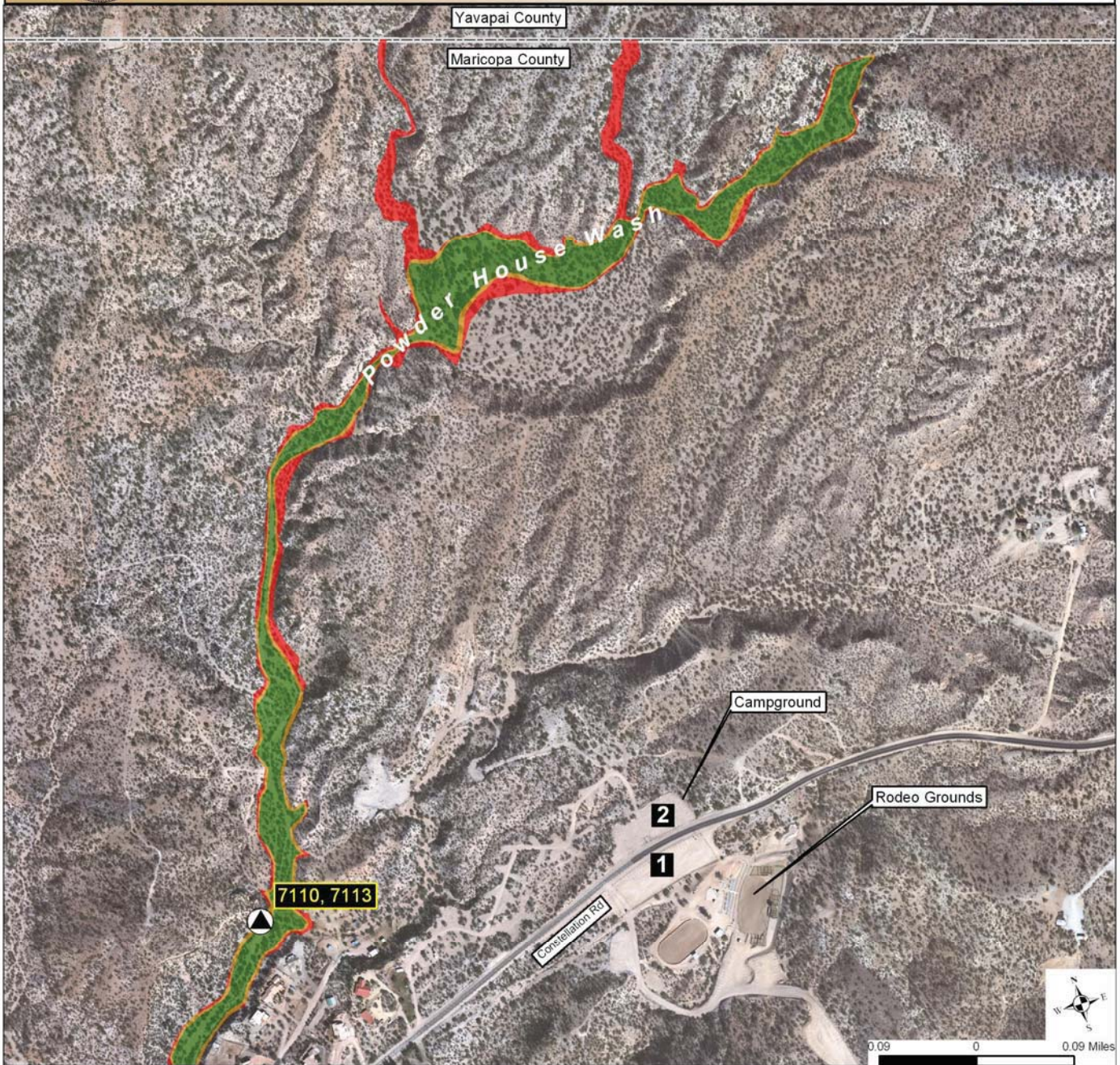




Powderhouse Wash Maricopa County Line to Rodeo Grounds



Alert Level

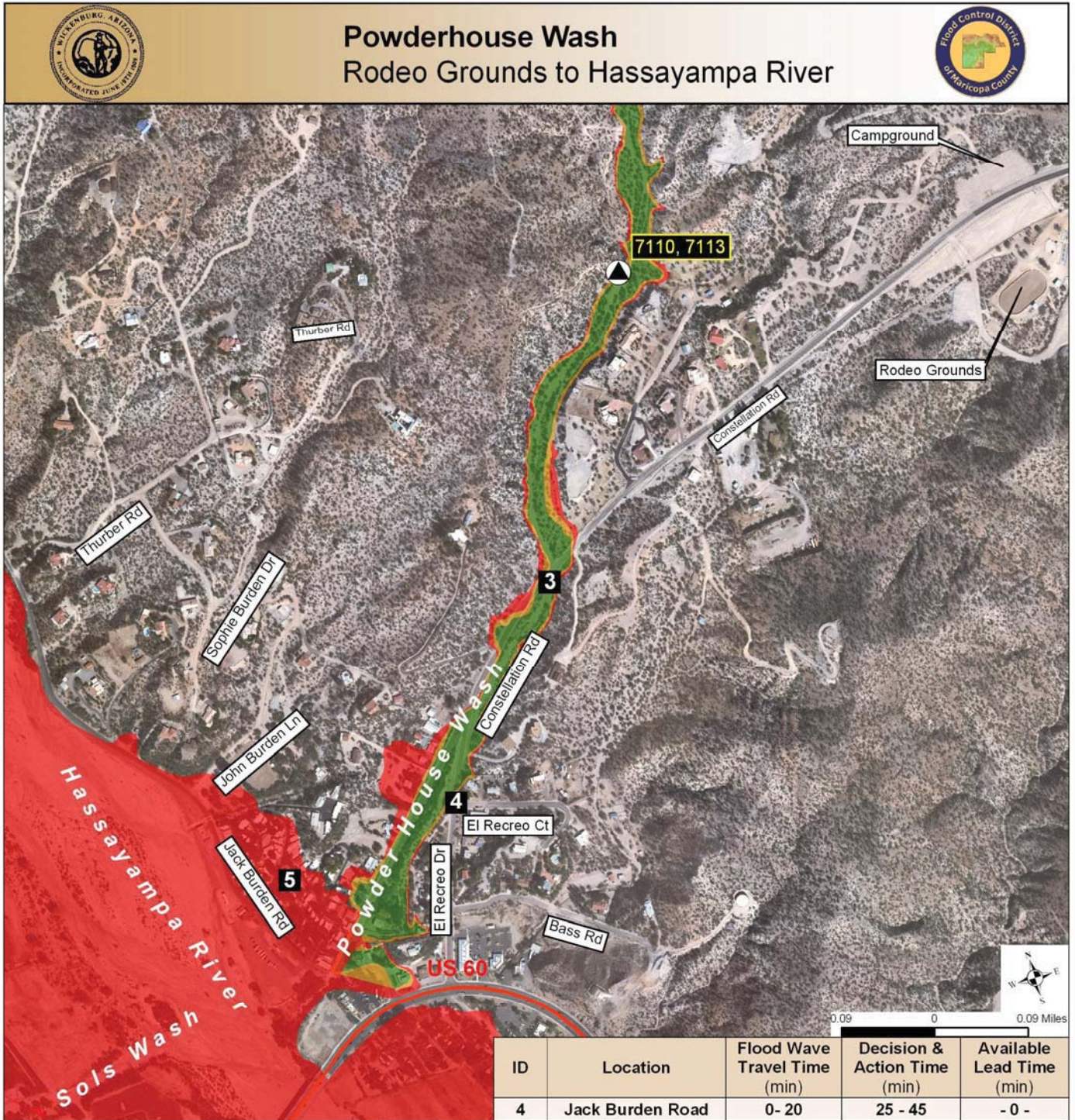


Locations of Concern - See Powderhouse Wash Flowchart Response Procedures

- 1, 2 Monitor Rodeo Grounds and Campground Activity**
- 1, 2 Shelter in Place Rodeo Grounds and Campground – Access at Risk**

Legend

- Precipitation Gage
- ▲ Precip/Water Level Gage
- ⊗ Water Level Gage
- ⊕ Weather Station
- Major Streets
- Wash
- ▬ Wickenburg Boundary



Alert Level



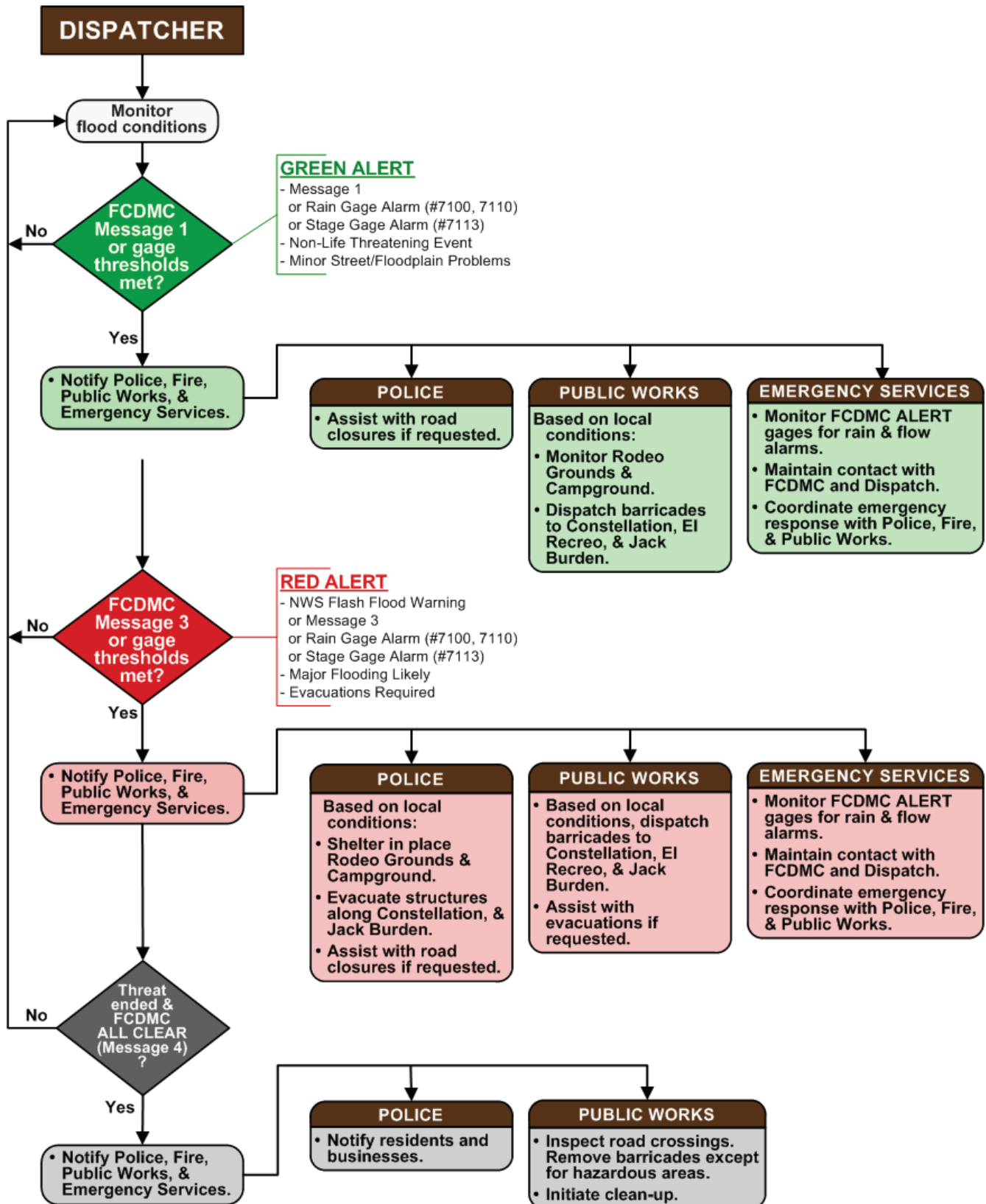
Locations of Concern - See Powderhouse Wash Flowchart Response Procedures

- 3. Street Flooding on Constellation Road – Adjacent Structures at Risk**
- 4. Street Flooding on El Recreo Drive**
- 5. Street Flooding on Jack Burden Road – Adjacent Structures at Risk**
- 3. Constellation Road Overtopped – Evacuate Adjacent Structures**
- 4. El Recreo Drive Overtopped**
- 5. Jack Burden Road – Evacuate Adjacent Structures**

Legend

- Precipitation Gage
- ▲ Precip/Water Level Gage
- ⊗ Water Level Gage
- ⊕ Weather Station
- Major Streets
- Wash
- ▬ Wickenburg Boundary

POWDERHOUSE WASH



POWDERHOUSE WASH

Notification Data for

GREEN ALERT and **RED ALERT**

(Phone Numbers Provided Separately)

Organization	Name/Title	Contact Information
Emergency Services	Ronnie Miller, Coordinator	
Police	Tony Melendez, Chief	
Fire	Ed Temerowski, Chief	
Public Works	1. Rick Austin, General Foreman 2. Chris Rich, Crew Leader 3. Adam Balowski 4. Joseph Gough 5. Dawn Bender	
Flood Control District of Maricopa County	ALERT Room or	
	Steve Waters	
	Jim Perfrement	