



**Alert Level**

**RED**

**Locations of Concern - See Hartman Wash Flowchart Response Procedures**

1. Monitor US60 Bridge
2. Monitor Town Infrastructure near Airport – Adjacent Structures at Risk

X – Denotes Private/County Road Not Barricaded by the Town of Wickenburg

Note: Jurisdiction of the Wickenburg Police & Public Works Departments is within the Town limits only.

**Legend**

- Precipitation Gage
- ▲ Precip/Water Level Gage
- ⊗ Water Level Gage
- ⊕ Weather Station
- Major Streets
- Wash
- Wickenburg Boundary





**Alert Level**

**RED**

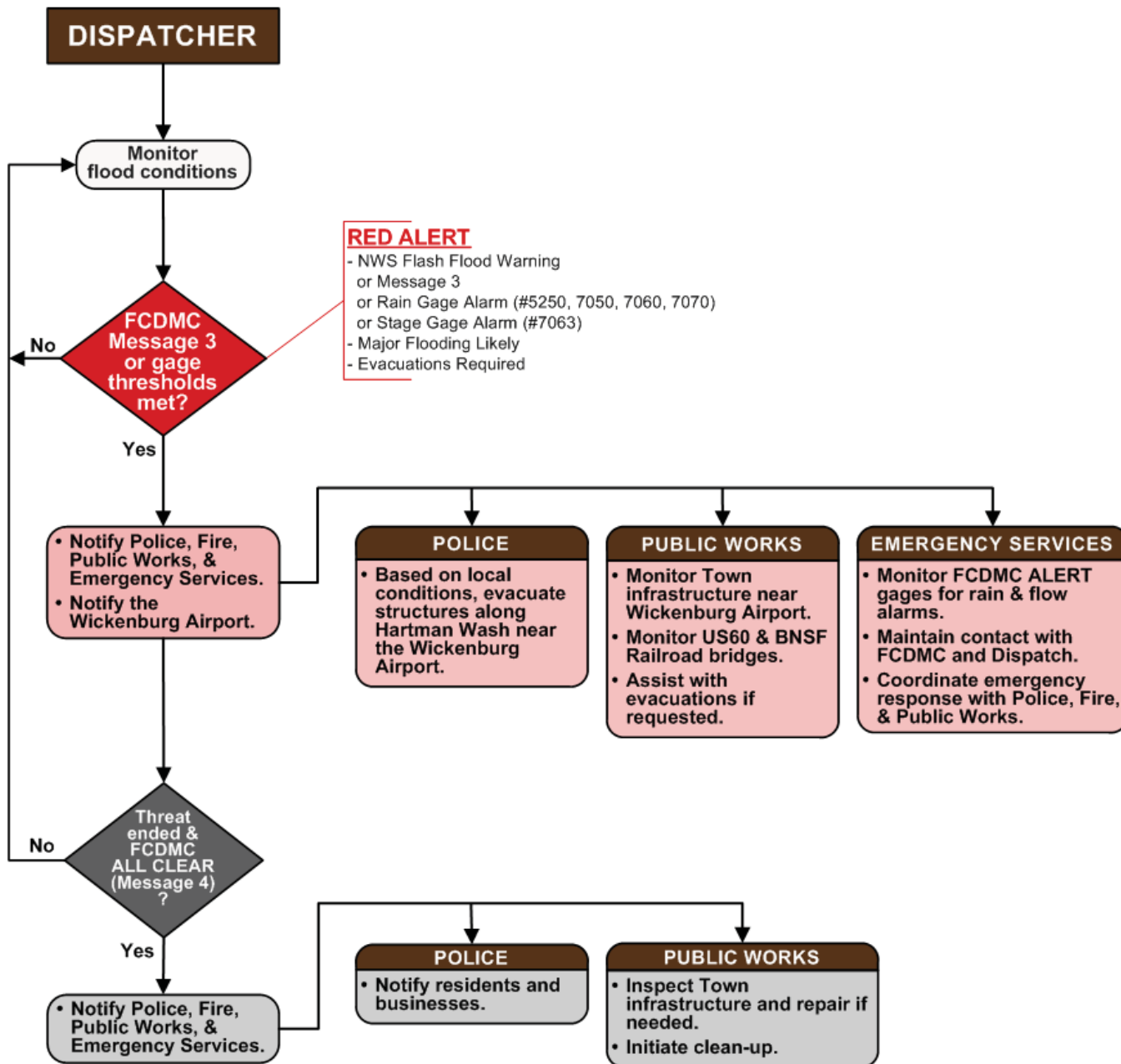
**Locations of Concern** - See Hartman Wash Flowchart Response Procedures

**3. Monitor BNSF Railroad Bridge**

**Legend**

- Precipitation Gage
- ▲ Precip/Water Level Gage
- ⊗ Water Level Gage
- ⊕ Weather Station
- Major Streets
- Wash
- Wickenburg Boundary

## HARTMAN WASH





## HARTMAN WASH

### Notification Data for

### RED ALERT

*(Phone Numbers Provided Separately)*

Organization	Name/Title	Contact Information
Emergency Services	Ronnie Miller, Coordinator	
Police	Tony Melendez, Chief	
Fire	Ed Temerowski, Chief	
Public Works	1. Rick Austin, General Foreman 2. Chris Rich, Crew Leader 3. Adam Balowski  4. Joseph Gough  5. Dawn Bender	
Wickenburg Municipal Airport	Gus Hauffler	
Flood Control District of Maricopa County	ALERT Room or	
	Steve Waters	
	Jim Perfrement	